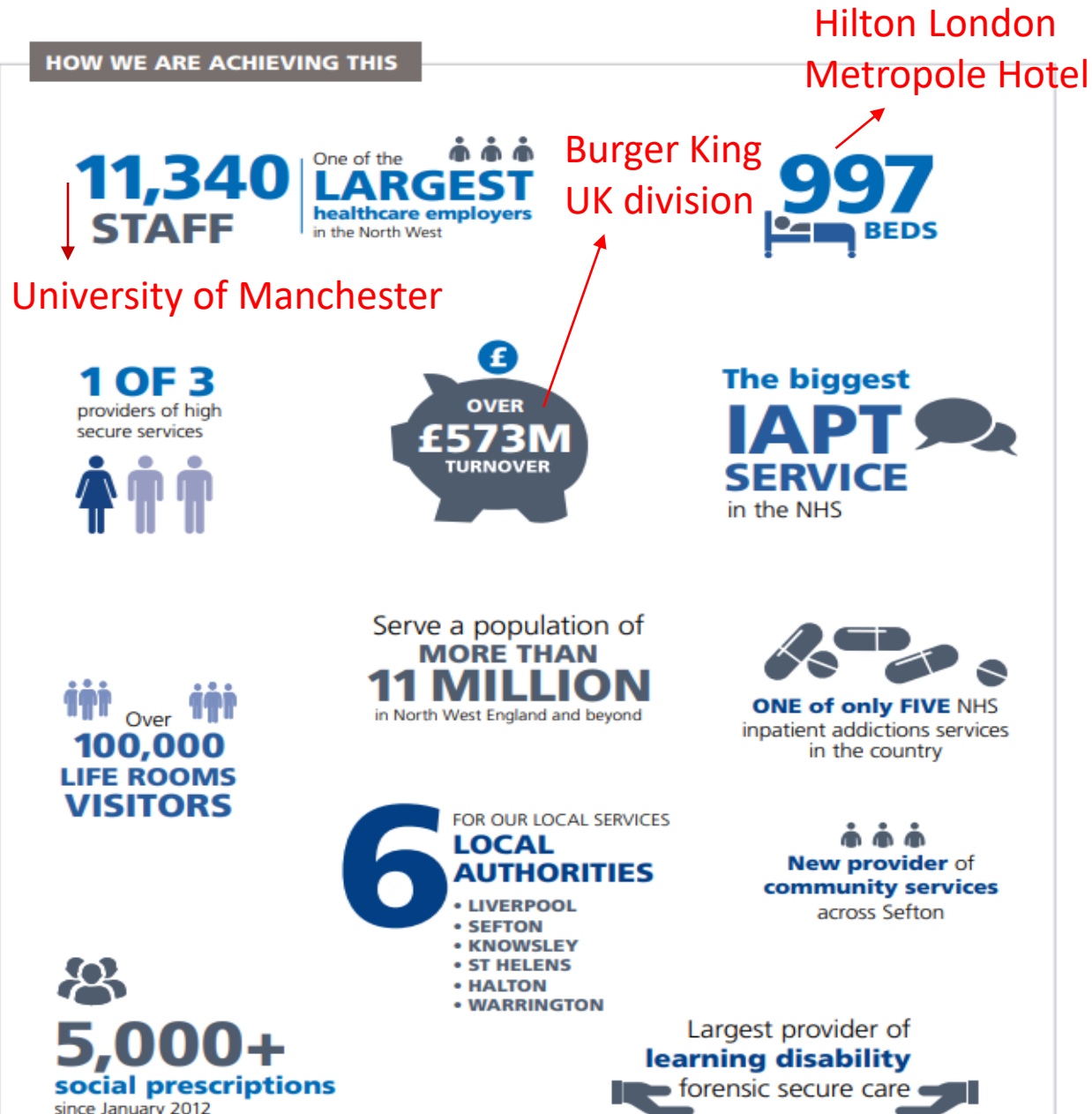


HOW WE ARE ACHIEVING THIS



OVERVIEW OF MERSEY CARE

At Mersey Care mental and physical health and wellbeing is our core business

Mersey Care is one of the largest trusts providing physical health and mental health services in England, serving more than 11 million people from Liverpool, up to Whalley in Lancashire.

We offer specialist inpatient and community services that support physical and mental health and specialist inpatient mental health, learning disability, addiction and brain injury services

Our clinical services are supported by a range of high quality teams which form the corporate division. These teams enable delivery of our strategy for more preventative and integrated care.

Corporate roles include delivering statutory duties such as governance, finance, health and safety and communications. Corporate staff work closely with clinical teams to develop more efficient services by identifying improved ways of working in future

Finance at Mersey Care and across the NHS

<https://youtu.be/TsiJnc1akRo>

Over 200 hospitals like Mersey Care in the country
– providing services to patients

Over 200 Clinical Commissioning Groups in the
country – making sure the right services are
available for patients in each area

Over 17,000 finance staff working in the NHS
across the country!

